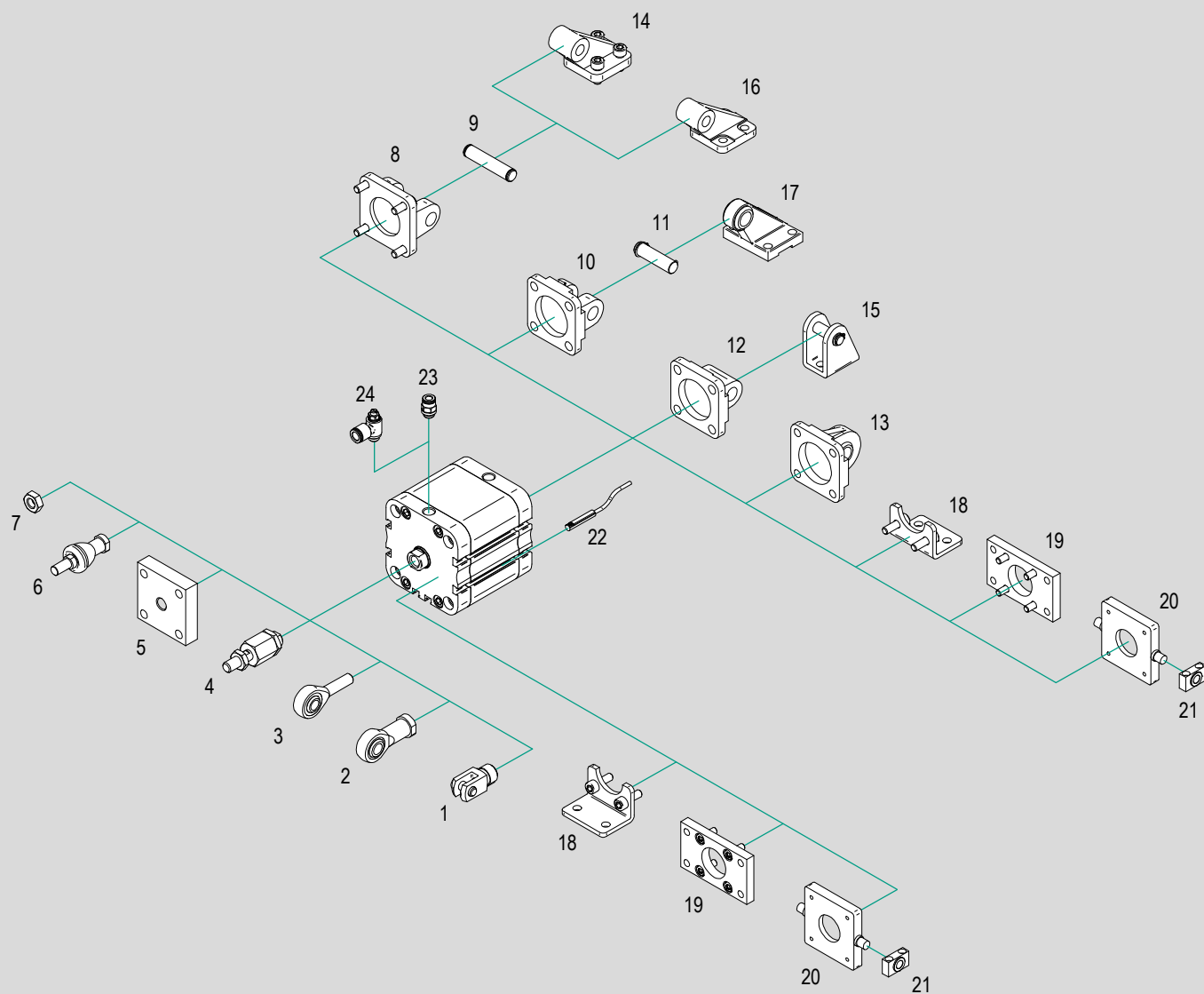


Accessories

1 - CYLINDERS



N.	Cylinder bore	Item	Description	Compliance	Matching		Code page	Data sheet page
					CIS	CI		
1	∅ 16 ÷ 125	FF..ISO	ISO female clevis with clip	ISO 8140	● ⁽¹⁾	● ⁽¹⁾	1.16.90	1.85.10
	∅ 20 ÷ 125	FFP..ISO	ISO female clevis with pin and seeger		● ⁽¹⁾	● ⁽¹⁾		1.85.11
		FFN..ISO	ISO female clevis (body only)		● ⁽¹⁾	● ⁽¹⁾		
2	∅ 16 ÷ 125	RF..SE	Bearing head (DIN 648K) with female thread	ISO 8139	● ⁽¹⁾	● ⁽¹⁾	1.16.90	1.90.1
3	∅ 16 ÷ 125	RM..SE	Bearing head (DIN 648K) with male thread		●	●		1.90.2
4	∅ 16 ÷ 125	GB..	Bearing - Self-aligning articulated coupling		● ⁽¹⁾	● ⁽¹⁾		1.90.10
5	∅ 16 ÷ 125	GC..	Self-aligning coupling	-	● ⁽¹⁾	● ⁽¹⁾	1.90.40	
6	∅ 16 ÷ 125	RBI..	Bearing - Axial articulated coupling	-	● ⁽¹⁾	● ⁽¹⁾	1.90.20	
		RBL..	Bearing - Angular articulated coupling	-	● ⁽¹⁾	● ⁽¹⁾	1.90.30	
7	∅ 16 ÷ 125	D..	Rod nut	UNI 5589	● ⁽¹⁾	● ⁽¹⁾	1.16.91	1.90.70
8	∅ 32 ÷ 125	CF..ALIS	Rear clevis	ISO MP2	●	●	1.16.91	1.100.1
		CF..AQIS			●	●		1.100.50
9		SEC..AQIS	Pin for rear clevis	ISO AA4	●	●	1.16.92	1.100.56
10	∅ 32 ÷ 125	CFS..ALIS	Narrow rear clevis	ISO AB6	●	●	1.16.91	1.100.2
		CFS..AQIS			●	●		1.100.50
11		SEC..ARAQIS	Anti-rotating pin for narrow rear clevis	ISO AA6	●	●	1.16.92	1.100.56
12	∅ 16 ÷ 25	CM..ALUN	Rear eye	UNITOP	●	●	1.16.91	1.100.3
	∅ 32 ÷ 125	CM..ALIS		ISO MP4	●	●		
	∅ 20 ÷ 25	CM..AQUN		UNITOP	●	●		1.100.51
	∅ 32 ÷ 125	CM..AQIS		ISO MP4	●	●		
13	∅ 32 ÷ 125	CMS..ALIS	Narrow rear eye with bearing (DIN 648K)	ISO MP6	●	●	1.16.93	1.100.4
		CMS..AQIS			●	●		1.100.52
14	∅ 32 ÷ 125	ASV..ALIS	Rear 90° hinge	ISO AB7 CETOP RP 107P	●	●	1.16.93	1.100.4
		ASV..AQIS			●	●		1.100.53
15	∅ 16 ÷ 25	CF..+P		ISO MP3	●	●		1.100.6
16	∅ 32 ÷ 125	AS..ALIS		ISO 6431	●	●		1.100.52
17	∅ 32 ÷ 125	ASS..AQIS	Rear 90° hinge with bearing (DIN 648K)	ISO CS7	●	●		1.100.52
18	∅ 16 ÷ 25	PB..AQUN	Low foot	UNITOP	●	●	1.16.92	1.100.55
	∅ 32 ÷ 125	PB..AQIS		ISO MS1	●	●		
19	∅ 16 ÷ 25	FL..ALUN	Flange	UNITOP	●	●	1.16.92	1.100.5
		FL..AQUN			●	●		1.100.54
	∅ 32 ÷ 125	FLV..ALIS		ISO VDMA MP1/MP2	●	●		1.100.5
		FLV..AQIS		●	●	1.100.54		
20	∅ 32 ÷ 125	CTA..AQIS	Center trunnion for heads	ISO MT5/MT6	●	●	1.16.93	1.100.57
21	∅ 32 ÷ 125	ST..AQIS	Support for center trunnion	ISO AT4	●	●		1.110.10
22	∅ 16 ÷ 125	ASV..	Magnetic reed switch T groove	-	●	●		1.113.1
		MK..	ATEX magnetic reed switch T groove	2014/34/EU	●	●		
23	∅ 16 ÷ 125	R..	Push-in fittings	-	●	●	4.2.1	
24	∅ 16 ÷ 125	V..C	Flow controls, for cylinders	-	●	●	4.94.1	

Key

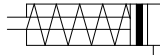
● matching accessory; - not matching accessory

(1) Matching only with option M

Main features

16 ÷ 100

Bores Ø



Single acting
Magnetic
With female thread

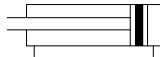
CIS

Type



16 ÷ 125

Bores Ø



Double acting
Magnetic
With female thread

CI

Type



Technical data

Bore Ø mm	16	20	25	32	40	50	63	80	100	125	
Fluid	Filtered compressed air with or without lubrication. Lubrication, if started, must be continued.										
Pressure range	2 ÷ 10 bar										
Temperature range	-20°C ÷ +80°C (standard / V1)			-20°C ÷ +150°C (V)				-40°C ÷ +80°C (BT)			
Port	M5			1/8"				1/4"			
Grooves for reed switches	3			5				6		4	
Strokes	CIS	5 ÷ 50 mm								-	
	CI*	5 ÷ 250 mm			5 ÷ 400 mm						
Rod thread	CI-CIS	M4	M6	M8		M10		M12		M16	
	CIM-CISM	M6	M8x1,25	M10x1,25		M12x1,25		M16x1,5		M20x1,5	

* With option N the maximum stroke is 200 mm

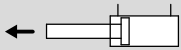
Standard strokes

Stroke mm	CIS Bore Ø mm								
	16	20	25	32	40	50	63	80	100
5									
10									
15									
20									
25									
30									
40									
50									

Stroke mm	CI Bore Ø mm										
	16	20	25	32	40	50	63	80	100	125	
5	✓	✓	✓	✓	✓	✓	✓	✓			
10	✓	✓	✓	✓	✓	✓	✓	✓			
15	✓	✓	✓	✓	✓	✓	✓	✓			
20	✓	✓	✓	✓	✓	✓	✓	✓			
25	✓	✓	✓	✓	✓	✓	✓	✓			
30	✓	✓	✓	✓	✓	✓	✓	✓			
40	✓	✓	✓	✓	✓	✓	✓	✓			
50	✓	✓	✓	✓	✓	✓	✓	✓			
60		✓	✓	✓	✓	✓	✓	✓			
80				✓	✓	✓	✓	✓			
100											
160											
200											
250											
300											
350											
400											

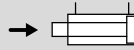
Key
 Standard stroke

Theoretical thrust force Unit: N



Ø Cylinder (mm)	Pressure (bar)
	6
16	-
20	188
25	294
32	482
40	754
50	1178
63	1869
80	3014
100	4710
125	-

Theoretical traction force Unit: N



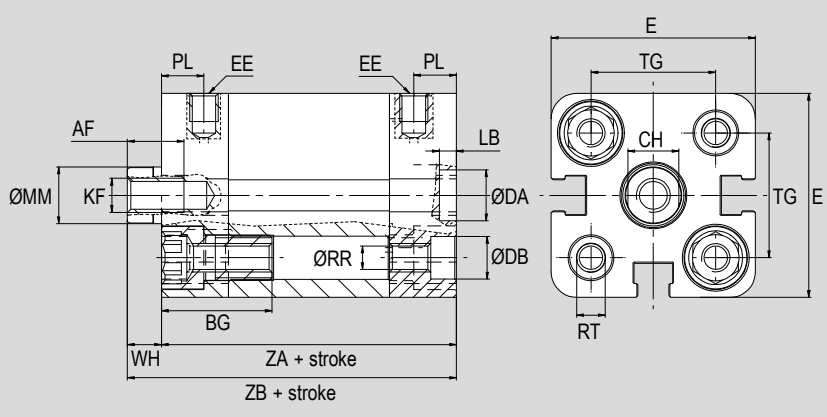
Ø Cylinder (mm)	Pressure (bar)
	6
16	-
20	141
25	247
32	414
40	633
50	989
63	1681
80	2720
100	4416
125	-

Theoretical spring force (for CIS type only) Unit: N

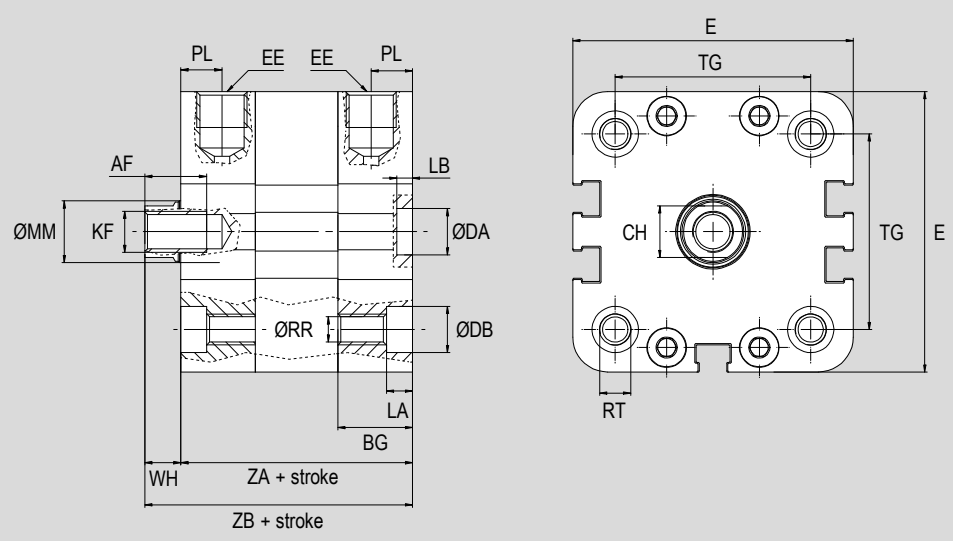
Ø Cylinder (mm)	Strokes (mm)															
	5		10		15		20		25		30		40		50	
	F1	F2	F1	F2	F1	F2	F1	F2	F1	F2	F1	F2	F1	F2	F1	F2
16	-	-	-	-	-	-	-	-	-	-	-	-	-	-	-	-
20	22	25	20	25	17	25	14	25	11	25	-	-	-	-	-	-
25	30	33	26	33	23	33	20	33	16	33	-	-	-	-	-	-
32	50	54	46	54	42	54	38	54	34	54	-	-	-	-	-	-
40	52	55	50	55	46	55	43	55	40	55	-	-	-	-	-	-
50	59	63	54	63	49	63	44	63	39	63	-	-	-	-	-	-
63	72	78	67	78	62	78	56	78	51	78	-	-	-	-	-	-
80	110	116	105	116	100	116	95	116	89	116	-	-	-	-	-	-
100	152	159	144	159	136	159	129	159	121	159	-	-	-	-	-	-

Standard dimensions

Type: **CIS-CI**
Ø 16 ÷ 25



Type: **CIS-CI**
Ø 32 ÷ 50

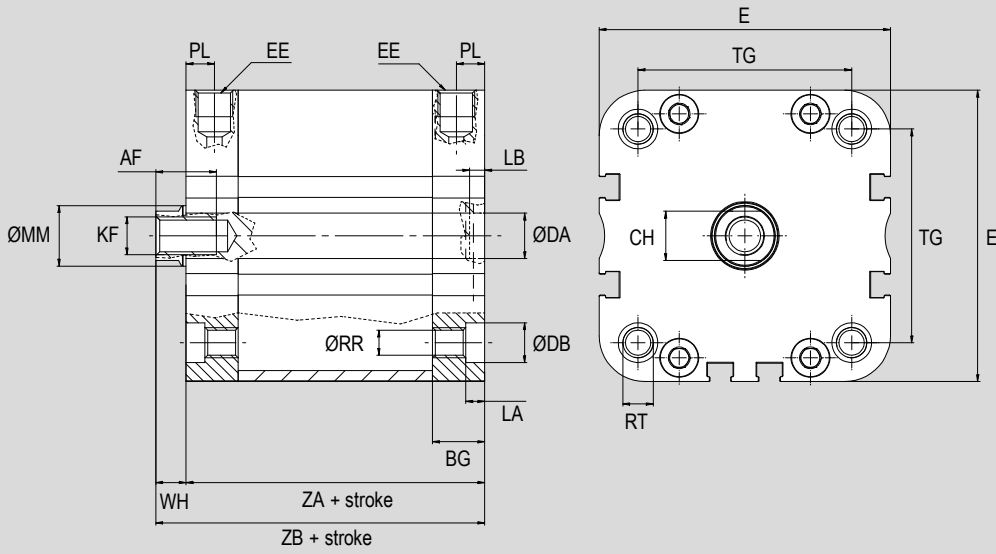


Ø (mm)	ØMM f7	AF	WH	ZA*	ZB*	KF	EE	BG	RR	TG	E	RT	LA	ØDB	PL	CH	ØDA h9	LB +0.1
16	8	10	4.5	35	39,5	M4	M5	11	3,2	18	29	M4	3,5	6	6,5	7	9	2,1
20	10	10	6	37	43	M6	M5	19,5	4,1	22	36	M5	4,5	7,5	7,5	9	9	3
25	10	10	6	39	45	M6	M5	19,5	4,1	26	40	M5	4,5	7,5	7,5	9	9	3
32	12	12	7	44	51	M8	G1/8"	14	5,1	32,5	49	M6	4,5	8	7,5	10	9	3
40	12	12	7	45	52	M8	G1/8"	14,5	5,1	38	54,5	M6	5	9	8	10	9	3
50	16	16	8	45	53	M10	G1/8"	14,5	6,6	46,5	65,5	M8	5	10,5	8	13	12	4

* CIS type Ø 20 ÷ 50, for strokes > 25 mm, add +20 mm to dimension;

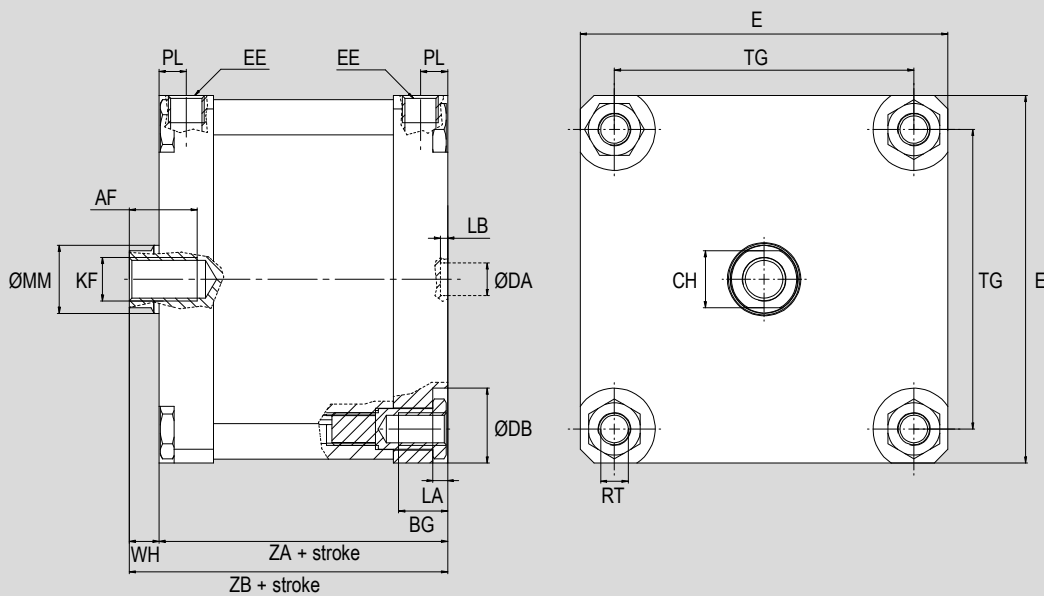
Standard dimensions

Type: **CIS-CI**
Ø 63 ÷ 100



1 - CYLINDERS

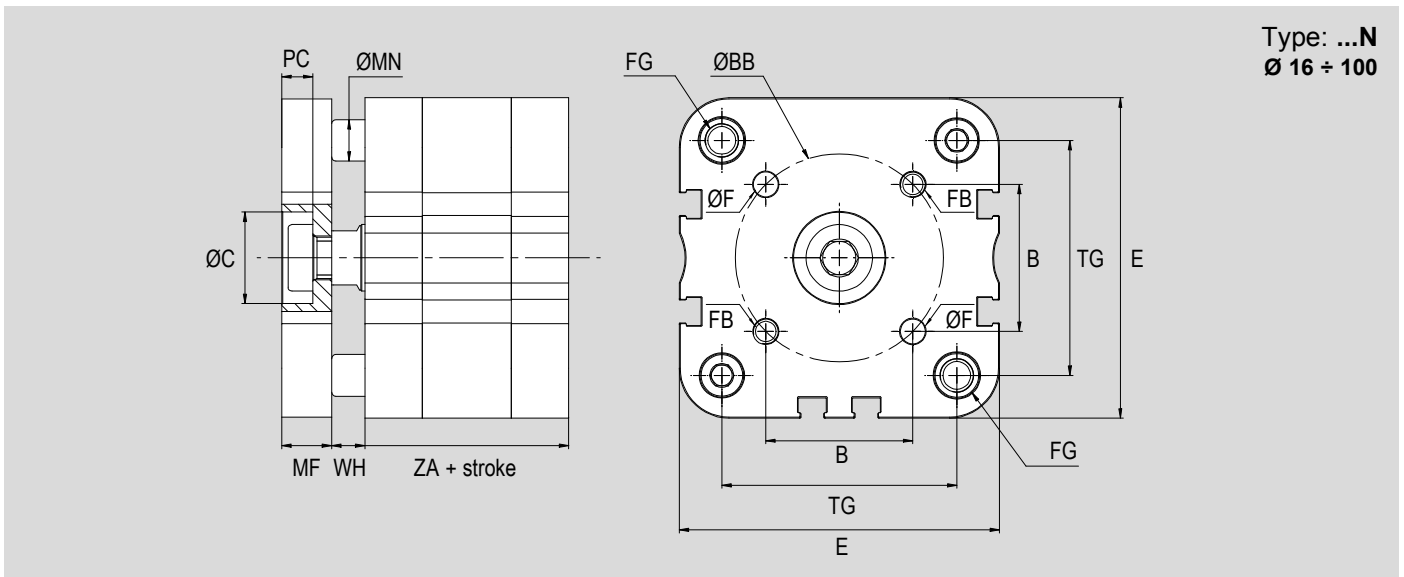
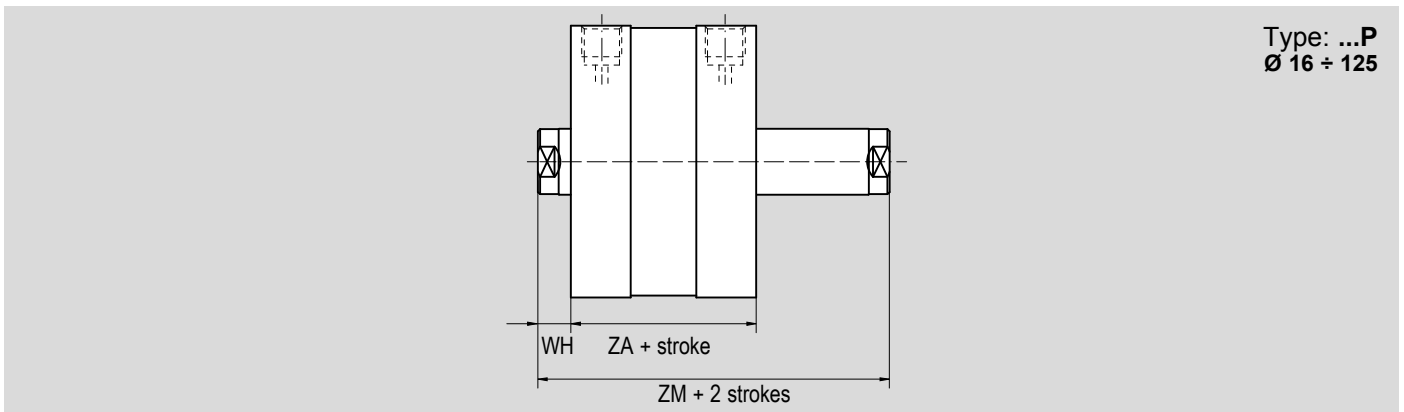
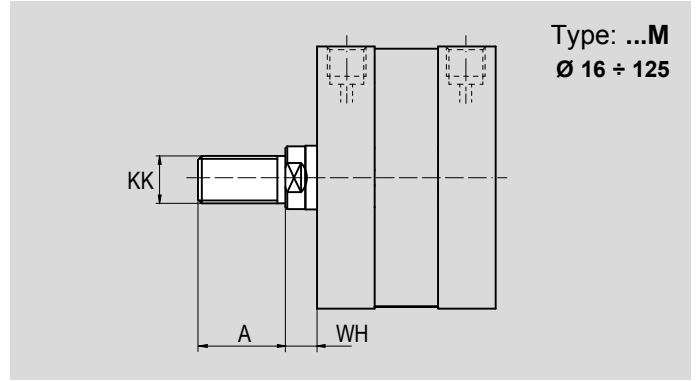
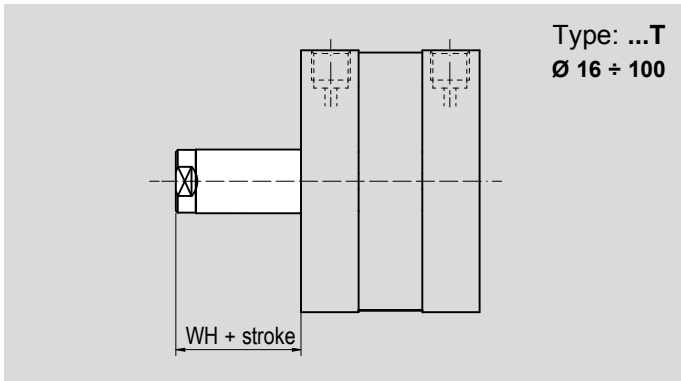
Type: **CI**
Ø 125



Ø (mm)	ØMM f7	AF	WH	ZA*	ZB*	KF	EE	BG	RR	TG	E	RT	LA	ØDB	PL	CH	ØDA h9	LB +0.1
63	16	16	8	49	57	M10	G1/8"	13,8	6,6	56,5	77	M8	5	10,5	7,5	13	12	4
80	20	20	10	54	64	M12	G1/8"	15	8,4	72	95,5	M10	3	13,5	8	17	12	4
100	25	20	10	67	77	M12	G1/8"	19,5	8,4	89	113,5	M10	3	14	10,5	21	12	4
125	25	25	11	81	92	M16	G1/4"	20	-	110	135	M12	-	-	10	21	12	2,6

* CIS type Ø 63 ÷ 100, for strokes > 25 mm, add +20 mm to dimension;

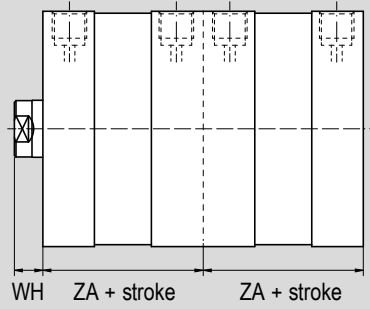
Dimensions with options



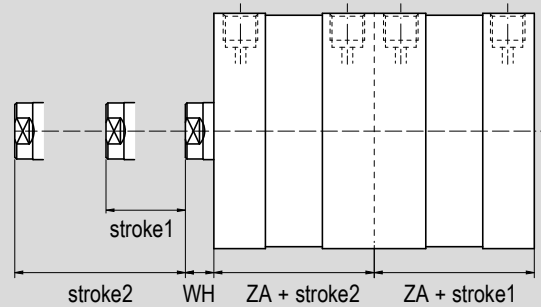
Ø (mm)	WH	MF +0.1	E	TG	B	FG	ØBB ±0.1	ØF +0.1	FB	ØC H9	PC	MN f7	ZA*	ZM*	KK	A
16	4,1	6	29	18	10	M4	14	3	M3	7,5	4,5	6	35	43,2	M6	12
20	6	8	36	22	12	M5	17	4	M4	11	5	6	37	49	M8x1,25	16
25	6	8	40	26	15,6	M5	22	5	M5	14	5	6	39	51	M8x1,25	16
32	7	10	49	32,5	19,8	M6	28	5	M5	17	6,5	6	44	58	M10x1,25	19
40	7	10	54,5	38	23,3	M6	33	5	M5	17	6,5	8	45	59	M10x1,25	19
50	8	12	65,5	46,5	29,7	M8	42	6	M6	22	7,5	10	45	61	M12x1,25	22
63	8	12	77	56,5	35,4	M8	50	6	M6	22	7,5	10	49	65	M12x1,25	22
80	10	14	95,5	72	46	M10	65	8	M8	28	9	14	54	74	M16x1,5	28
100	10	14	113,5	89	56,6	M10	80	10	M10	30	10	14	67	87	M16x1,5	28
125	11	-	-	-	-	-	-	-	-	-	-	-	81	103	M20x1,5	40

* CIS type Ø 20 ÷ 100, for strokes > 25 mm, add +20 mm to dimension;

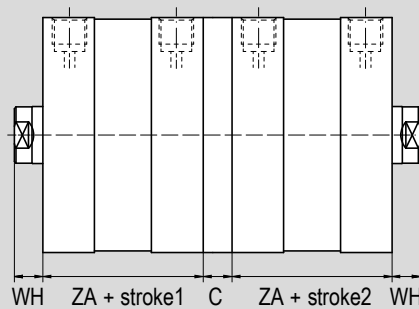
Dimensions tandem versions



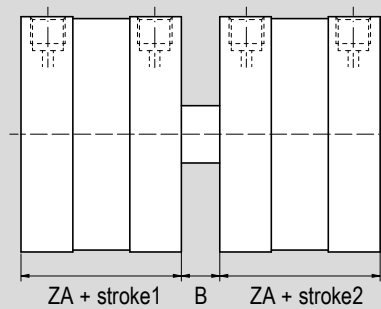
Type: ...TA1
Ø 25 - 40 - 63



Type: ...TA2
Ø 25 - 40 - 63




Type: ...TA3
Ø 20 ÷ 125



Type: ...TA4
Ø 20 ÷ 100


Ø mm	WH	ZA	B	C
20	6	37	9	13
25	6	39	11	13
32	7	44	12	15
40	7	45	13	15
50	8	45	15	15
63	8	49	15	15
80	10	54	16	17
100	10	67	20	19,5
125	11	81	-	19,5

Female clevis with clip FF..ISO

	For cylinder Ø mm	Code	Item	Compliance
	16	041002	FF06ISO/DIN	
	20-25	041003	FF08ISO/DIN	
	32-40	041004	FF10ISO	
	50-63	041005	FF12ISO	
	80-100	041006	FF16ISO	
	125	041007	FF20ISO	


Matching with option M only

Female clevis with pin and seeger FFP..ISO

	For cylinder Ø mm	Code	Item	Compliance
	16	-	FFP06ISO/DIN	
	20-25	-	FFP08ISO/DIN	
	32-40	041051	FFP10ISO	
	50-63	041040	FFP12ISO	
	80-100	041013	FFP16ISO	
	125	041017	FFP20ISO	


Matching with option M only

Female clevis (body only) FFN..ISO

	For cylinder Ø mm	Code	Item	Compliance
	16	041011	FFN06ISO/DIN	
	20-25	041018	FFN08ISO/DIN	
	32-40	041014	FFN10ISO	
	50-63	041016	FFN12ISO	
	80-100	041012	FFN16ISO	
	125	041015	FFN20ISO	


Matching with option M only

Bearing heads (DIN 648K) with female thread RF..SE

	For cylinder Ø mm	Code	Item	Compliance
	16	041552	RF6SE	
	20-25	041553	RF8SE	
	32-40	041554	RF10SE	
	50-63	041555	RF12SE	
	80-100	041557	RF16SE	
	125	041559	RF20SE	


Matching with option M only

Bearing heads (DIN 648K) with male thread RM..SE

	For cylinder Ø mm	Code	Item	Compliance
	16	041500	RM4SE	
	20-25	041502	RM6SE	
	32-40	041503	RM8SE	
	50-63	041550	RM10SE/M10x1,5	
	80-100	041514	RM12SE/M12	
	125	041517	RM16SE/M16	


Matching with option M only

Self-aligning articulated coupling GB..

	For cylinder Ø mm	Code	Item	Compliance
	16	041702	GB010	-
	20-25	041703	GB020	
	32-40	041704	GB040	
	50-63	041706	GB060	
	80-100	041708	GB100	
	125	041709	GB120	


Matching with option M only

Axial articulated coupling RBL..

	For cylinder Ø mm	Code	Item	Compliance
	32-40	041604	RBL10	-
	50-63	041605	RBL12	
	80-100	041607	RBL16	
	125	041609	RBL20	


Matching with option M only

Angular articulated coupling RBL..

	For cylinder Ø mm	Code	Item	Compliance
	32-40	041654	RBL10	-
	50-63	041655	RBL12	
	80-100	041657	RBL16	
	125	041659	RBL20	


Matching with option M only

Self-aligning coupling GC..


	For cylinder Ø mm	Code	Item	Compliance
	32-40	041722	GCM10x1,25	-
	50-63	041723	GCM12x1,25	
	80-100	041724	GCM16x1,5	
	125	041725	GCM20x1,5	

Matching with option M only


Rear clevis in aluminium with screws and pin CF..ALIS+VP

	For cylinder Ø mm	Code	Item	Compliance
	32	042050		CF032ALIS+VP
40	042051		CF040ALIS+VP	
50	042052		CF050ALIS+VP	
63	042053		CF063ALIS+VP	
80	042054		CF080ALIS+VP	
100	042055		CF100ALIS+VP	
125	042056		CF125ALIS+VP	


Narrow rear clevis in aluminium with screws and pin CFS..ALIS+VP

	For cylinder Ø mm	Code	Item	Compliance
	32	042110		CFS032ALIS+VP
40	042111		CFS040ALIS+VP	
50	042112		CFS050ALIS+VP	
63	042113		CFS063ALIS+VP	
80	042114		CFS080ALIS+VP	
100	042115		CFS100ALIS+VP	
125	042116		CFS125ALIS+VP	

Rear clevis in aluminium* with screws CF..ALIS+V

	For cylinder Ø mm	Code	Item	Compliance
	32	040441		CF032ALIS+V
40	040442		CF040ALIS+V	
50	040443		CF050ALIS+V	
63	040444		CF063ALIS+V	
80	040445		CF080ALIS+V	
100	040446		CF100ALIS+V	
125	040447		CF125ALIS+V	


Narrow rear clevis in aluminium* with screws CFS..ALIS+V

	For cylinder Ø mm	Code	Item	Compliance
	32	040451		CFS032ALIS+V
40	040452		CFS040ALIS+V	
50	040453		CFS050ALIS+V	
63	040454		CFS063ALIS+V	
80	040455		CFS080ALIS+V	
100	040456		CFS100ALIS+V	
125	040457		CFS125ALIS+V	

*Available also in steel (item CF..AQIS+V) in Ø 32 ÷ 125, see page 1.100.50


*Available also in steel (item CFS..AQIS+V) in Ø 32 ÷ 125, see page 1.100.50

Rear eye in aluminium* CM..ALUN

	For cylinder Ø mm	Code	Item	Compliance
	16	040701		CM012/016ALUN
20	040702		CM020ALUN	
25	040703		CM025ALUN	


*Available also in steel (item CM..AQUN) in Ø 20 ÷ 25, see page 1.100.51
Screws to be ordered separately, see page 1.101.40

Rear eye in aluminium* with screws CM..ALIS+V

	For cylinder Ø mm	Code	Item	Compliance
	32	042061		CM032ALIS+V
40	042062		CM040ALIS+V	
50	042063		CM050ALIS+V	
63	042064		CM063ALIS+V	
80	042065		CM080ALIS+V	
100	042066		CM100ALIS+V	
125	042067		CM125ALIS+V	


*Available also in steel (item CM..AQIS+V) in Ø 32 ÷ 125, see page 1.100.51

Narrow rear eye with bearing (DIN 648K) in aluminium* with screws CMS..ALIS+V

	For cylinder Ø mm	Code	Item	Compliance
	32	042101		CMS032ALIS+V
40	042102		CMS040ALIS+V	
50	042103		CMS050ALIS+V	
63	042104		CMS063ALIS+V	
80	042105		CMS080ALIS+V	
100	042106		CMS100ALIS+V	
125	042107		CMS125ALIS+V	



Available also in steel (item CMS..AQIS+V) in Ø 32 ÷ 125, see page 1.100.52

Rod nut D..

	For cylinder Ø mm	Code	Item	Compliance
	16	041450		D6x1
20-25	041451		D8x1,25	
32-40	041452		D10x1,25	
50-63	041454		D12x1,25	
80-100	041455		D16x1,5	
25	041456		D20x1,5	



Matching with option M only

Pin with seeger* in steel SEC..AQIS

	For cylinder Ø mm	Code	Item	Compliance
	32	040261	SEC032AQIS	
	40	040262	SEC040AQIS	
	50	040263	SEC050AQIS	
	63	040264	SEC063AQIS	
	80	040265	SEC080AQIS	
	100	040266	SEC100AQIS	
	125	040267	SEC125AQIS	



*Supplied with 2 seeger

Anti-rotating pin with seeger* in steel SEC..ARAQIS

	For cylinder Ø mm	Code	Item	Compliance
	32	040571	SEC032ARAQIS	
	40	040572	SEC040ARAQIS	
	50	040573	SEC050ARAQIS	
	63	040574	SEC063ARAQIS	
	80	040575	SEC080ARAQIS	
	100	040576	SEC100ARAQIS	
	125	040577	SEC125ARAQIS	



*Supplied with 1 seeger

Flange in aluminium FL..ALUN



	For cylinder Ø mm	Code	Item	Compliance
	12-16	040721	FL012/016ALUN	
	20	040722	FL020ALUN	
	25	040723	FL025ALUN	

Screws to be ordered separately, see page 1.101.40

Flange in aluminium with screws FLV..ALIS+V



	For cylinder Ø mm	Code	Item	Compliance
	32	042150	FLV032ALIS+V	
	40	042151	FLV040ALIS+V	
	50	042152	FLV050ALIS+V	
	63	042153	FLV063ALIS+V	
	80	042154	FLV080ALIS+V	
	100	042155	FLV100ALIS+V	
	125	042156	FLV125ALIS+V	

Flange in steel FL..AQUN



	For cylinder Ø mm	Code	Item	Compliance
	12-16	040751	FL012/016AQUN	
	20	040752	FL020AQUN	
	25	040753	FL025AQUN	

Screws to be ordered separately, see page 1.101.40

Flange in steel with screws FLV..AQIS+V

	For cylinder Ø mm	Code	Item	Compliance
	32	042119	FLV032AQIS+V	
	40	042120	FLV040AQIS+V	
	50	042121	FLV050AQIS+V	
	63	042122	FLV063AQIS+V	
	80	042123	FLV080AQIS+V	
	100	042124	FLV100AQIS+V	
	125	042125	FLV125AQIS+V	



Low foot* in steel PB..AQUN

	For cylinder Ø mm	Code	Item	Compliance
	16	040761	PB012/016AQUN	
	20	040762	PB20AQUN	
	25	040763	PB25AQUN	

*Supplied individually

Screws to be ordered separately, see page 1.101.40

Low foot* in steel with screws PB..AQIS+V

	For cylinder Ø mm	Code	Item	Compliance
	32	042129	PB032AQIS+V	
	40	042130	PB040AQIS+V	
	50	042131	PB050AQIS+V	
	63	042132	PB063AQIS+V	
	80	042133	PB080AQIS+V	
	100	042134	PB100AQIS+V	
	125	042135	PB125AQIS+V	

*Supplied individually

Center trunnion for heads in steel with screws CTA..AQIS+V

	For cylinder Ø mm	Code	Item	Compliance
	32	040591	CTA032AQIS+V	 MT5/MT6
	40	040592	CTA040AQIS+V	
	50	040593	CTA050AQIS+V	
	63	040594	CTA063AQIS+V	
	80	040595	CTA080AQIS+V	
	100	040596	CTA100AQIS+V	
	125	040598	CTA125AQIS+V	

Support ST..AQIS to be ordered separately, see next

Support for center trunnion* in steel ST..AQIS

	For cylinder Ø mm	Code	Item	Compliance
	32	040681	ST032AQIS	 AT4
	40-50	040682	ST040/050AQIS	
	63-80	040684	ST063/080AQIS	
	100-125	040686	ST100/125AQIS	

*Supplied individually

Rear 90° hinge in aluminium* with screws ASV..ALIS+V

	For cylinder Ø mm	Code	Item	Compliance
	32	042081	ASV032ALIS+V	 AB7 RP 107P
	40	042082	ASV040ALIS+V	
	50	042083	ASV050ALIS+V	
	63	042084	ASV063ALIS+V	
	80	042085	ASV080ALIS+V	
	100	042086	ASV100ALIS+V	
	125	042087	ASV125ALIS+V	

*Available also in steel: item CF..+P for Ø 16 ÷ 25 and item ASV..AQIS for Ø 32 ÷ 125, see page 1.100.53

Rear 90° hinge in aluminium AS..ALIS

	For cylinder Ø mm	Code	Item	Compliance
	32	040361	AS032ALIS	 6431
	40	040362	AS040ALIS	
	50	040363	AS050ALIS	
	63	040364	AS063ALIS	
	80	040365	AS080ALIS	
	100	040366	AS100ALIS	
	125	040367	AS125ALIS	

Rear 90° hinge with bearing (DIN 648K) in steel ASS..AQIS

	For cylinder Ø mm	Code	Item	Compliance
	32	040551	ASS032AQIS	 CS7
	40	040552	ASS040AQIS	
	50	040553	ASS050AQIS	
	63	040554	ASS063AQIS	
	80	040555	ASS080AQIS	
	100	040556	ASS100AQIS	
	125	040557	ASS125AQIS	

Magnetic reed switch T groove ASV..

	For cylinder Ø mm	Code	Item	Cylinder matching
	16 ÷ 125	070946	ASV1C525	 CIS CI
		071863	ASV1C550	
		071864	ASV1C51K	
		071189	ASV1C5M8	
		073639	ASV4D225	
		070246	ASV4D2M8	
		070247	ASV7N2M8	
		070372	ASV7M2M8	
		072918	ASV1H525	

ATEX magnetic reed switch T groove MK..

	For cylinder Ø mm	Code	Item	Compliance	Cylinder matching
	16 ÷ 125	071120	MK500A	 3D	CIS CI
		071108	MK502A	 II1G	